



OpenStreetMap.org

OSM for short

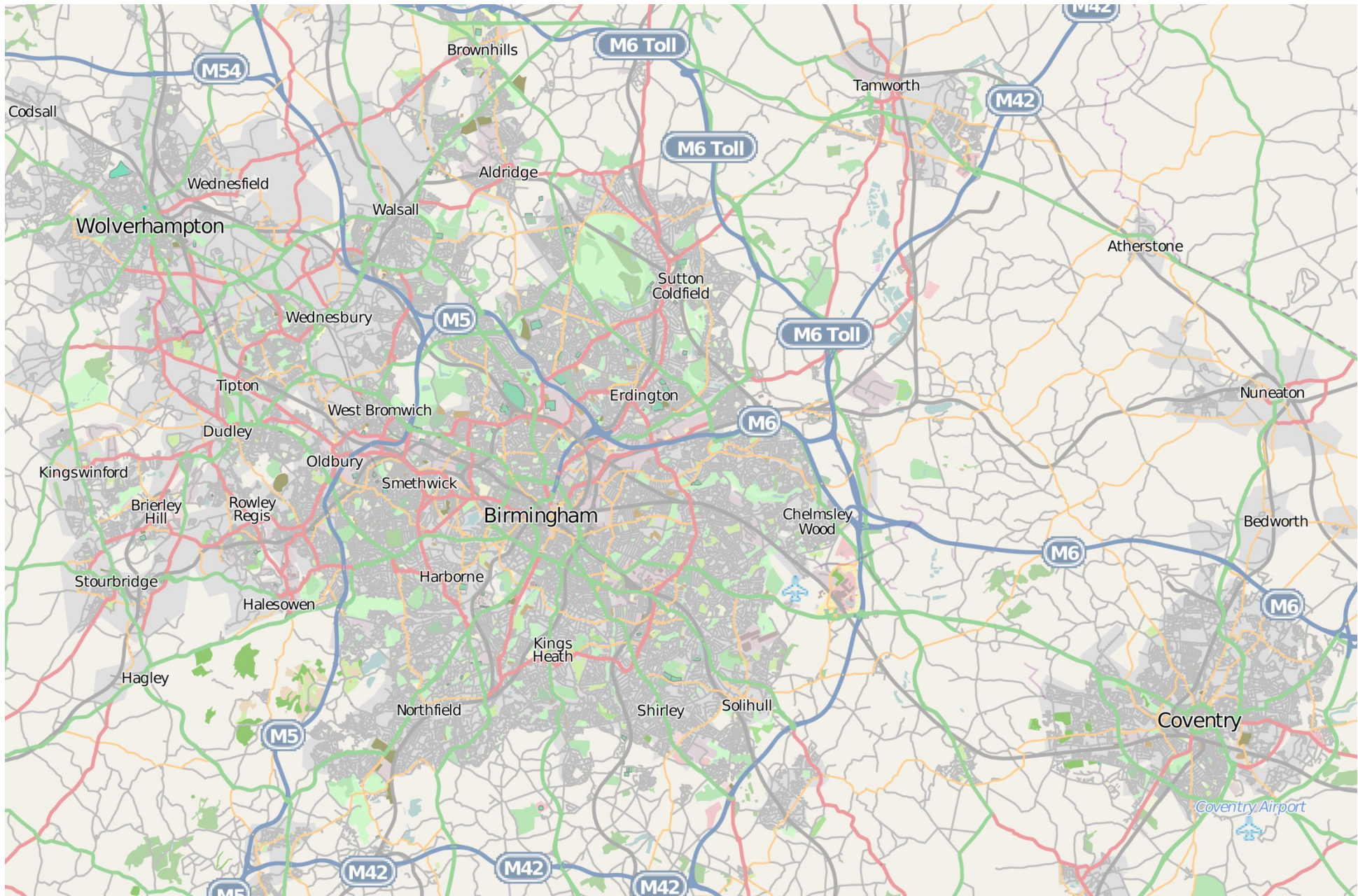
Τι είναι;

Το **OpenStreetMap** είναι ένας ψηφιακός δικτυακός χάρτης ελεύθερος για όλους.

Μας επιτρέπει να δούμε, διορθώσουμε και να χρησιμοποιήσουμε γεωγραφικά δεδομένα οπουδήποτε στην γη και σε συνεργασία με άλλους χρήστες.

Ο οργανισμός

Ο οργανισμός **OpenStreetMap** είναι ένας μη κερδοσκοπικός διεθνής οργανισμός ο οποίος στηρίζει αλλά δεν ελέγχει το έργο. Σκοπός του είναι η ενθάρρυνση της χρήσης, ανάπτυξης και διάθεσης ανοιχτών γεωδεδομένων, ελεύθερα για τον καθένα ώστε να τα χρησιμοποιήσει ή/και να τα μοιραστεί με άλλους.





The Free Wiki World Map

OpenStreetMap is a free editable map of the whole world. It is made by people like you.

OpenStreetMap allows you to view, edit and use geographical data in a collaborative way from anywhere on Earth.

OpenStreetMap's hosting is kindly supported by the UCL VR Centre and byemark. Other supporters of the project are listed in the wiki.

Help & Wiki
Copyright & License
News blog
Shop
Map key

Search Where am I?

examples: 'Alkmaar', 'Regent Street, Cambridge', 'CB2 5AQ', or 'post offices near Lünen'
[more examples...](#)

Make a Donation



Permalink
Shortlink



The Free Wiki World Map

OpenStreetMap is a free editable map of the whole world. It is made by people like you.

OpenStreetMap allows you to view, edit and use geographical data in a collaborative way from anywhere on Earth.

OpenStreetMap's hosting is kindly supported by the UCL VR Centre and byemark. Other supporters of the project are listed in the wiki.

Help & Wiki
Copyright & License
News blog
Shop
Map key

Search Where am I?

examples: 'Alkmaar', 'Regent Street, Cambridge', 'CB2 5AQ', or 'post offices near Lünen'
more examples...

Make a Donation



Permalink
Shortlink



The Free Wiki World Map

OpenStreetMap is a free editable map of the whole world. It is made by people like you.

OpenStreetMap allows you to view, edit and use geographical data in a collaborative way from anywhere on Earth.

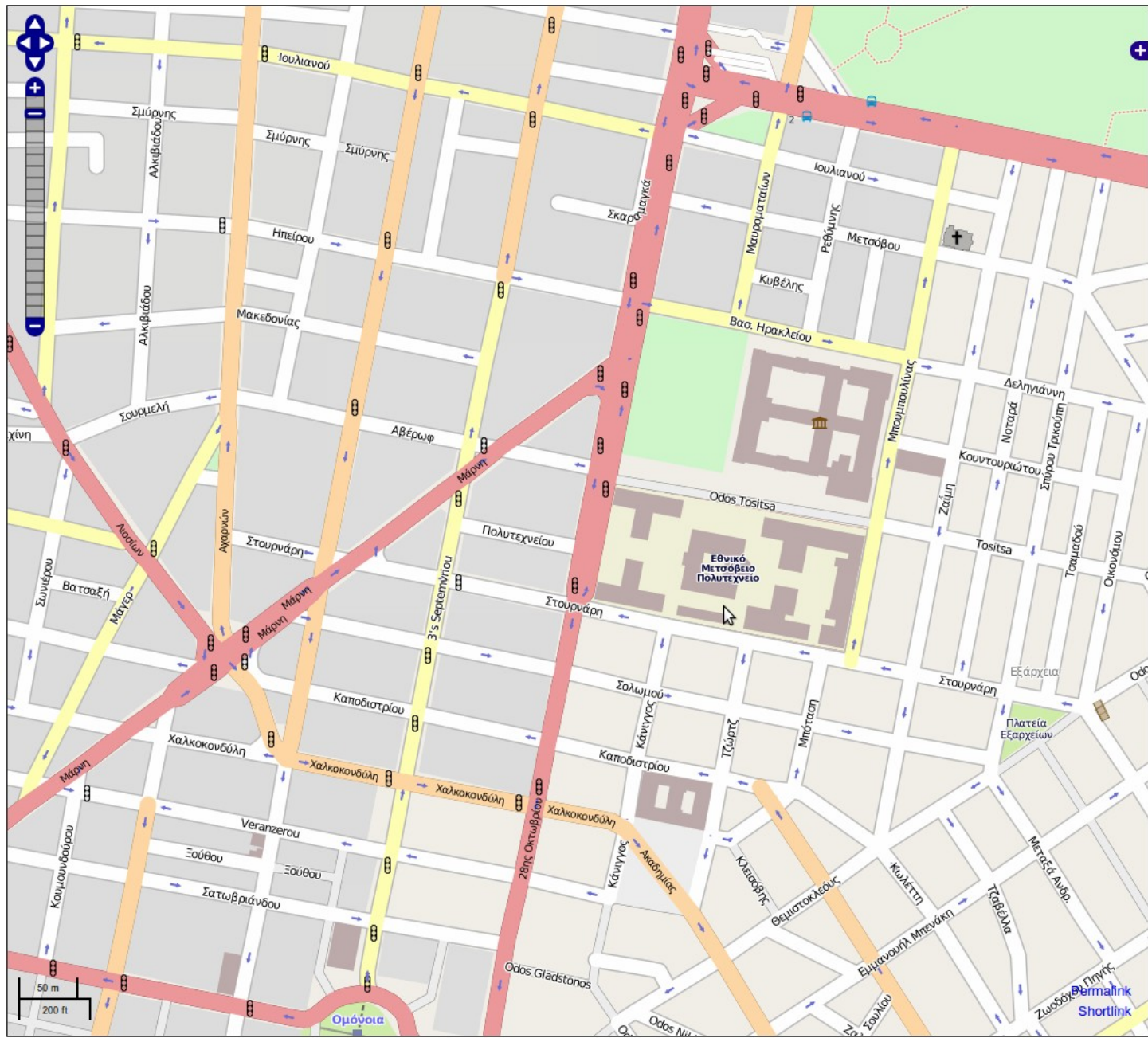
OpenStreetMap's hosting is kindly supported by the UCL VR Centre and bytemark. Other supporters of the project are listed in the wiki.

Help & Wiki
Copyright & License
News blog
Shop
Map key

Search Where am I?

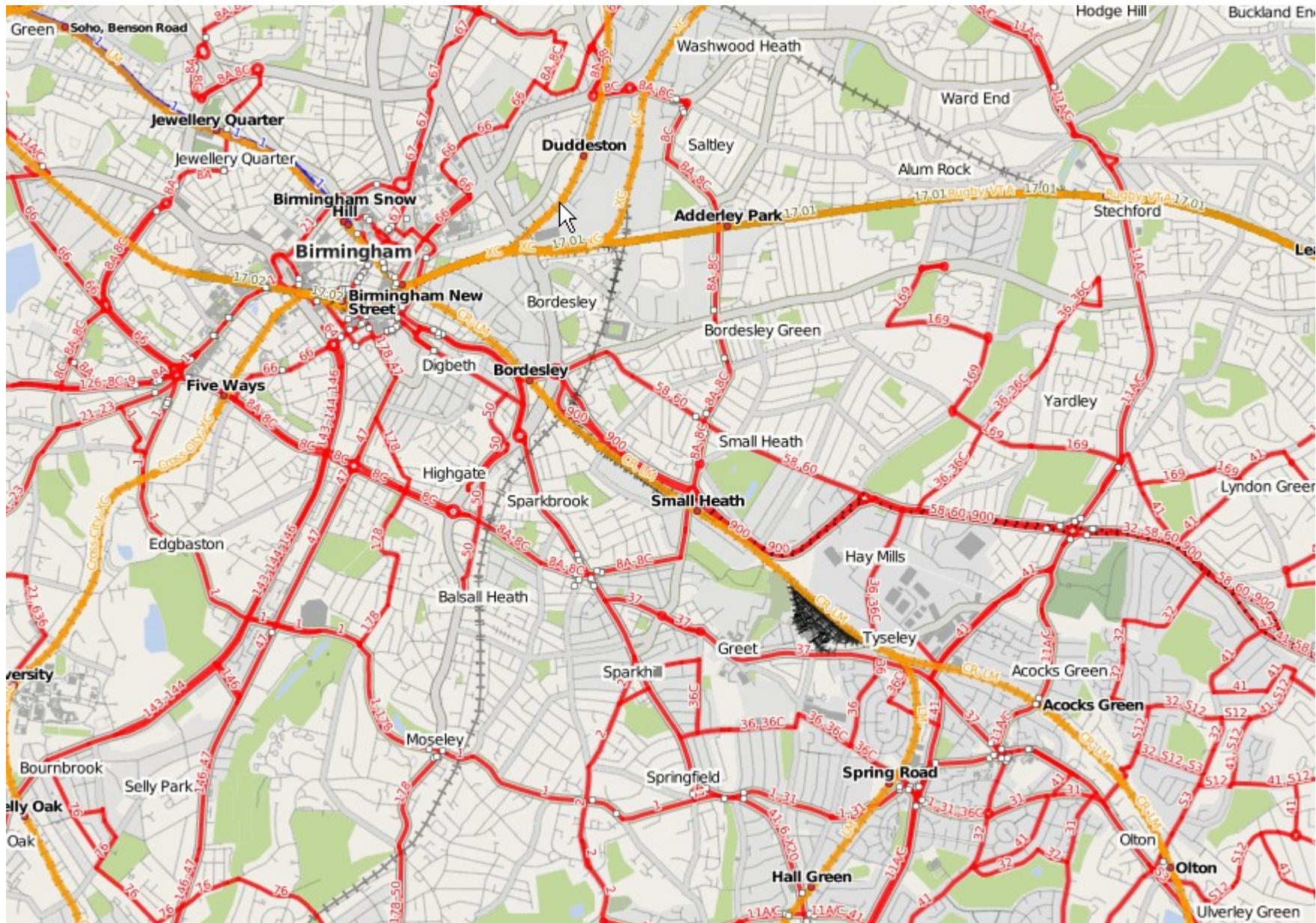
examples: 'Alkmaar', 'Regent Street, Cambridge', 'CB2 5AQ', or 'post offices near Lünen' more examples...

Make a Donation



Bernalink Shortlink





Routes for Link with New Street to Link with Curzon Street

Journey no.
#92617

[\[change\]](#) [\[return\]](#)

If you decide to follow the suggested journey below please take extra care on unfamiliar sections - proceed at your own risk as route quality cannot be guaranteed.

Fastest route

Balanced route

Quietest route

Fastest route [With turn-by-turn details below]

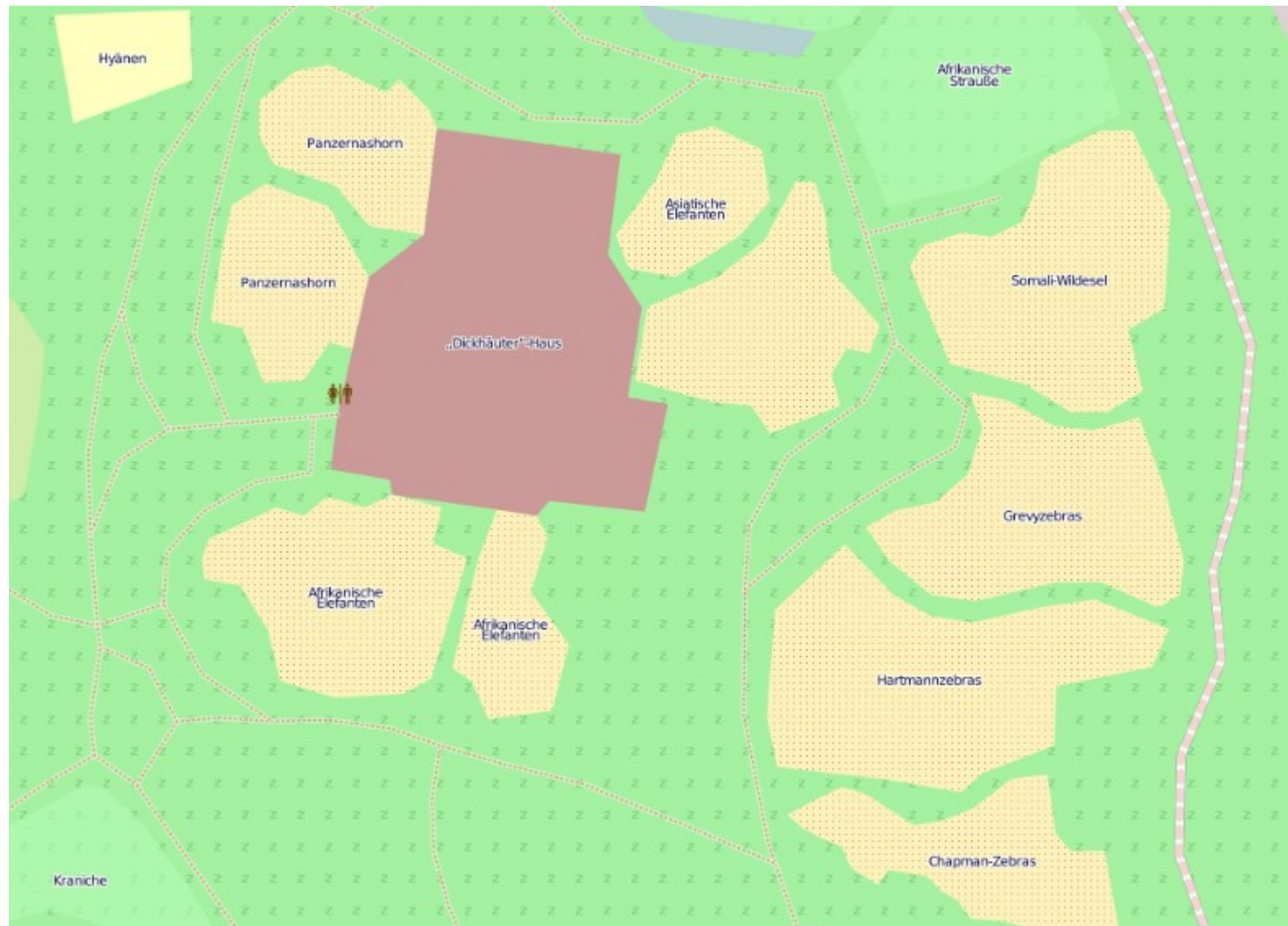
BETA: Please give us [quick feedback](#) if the route seems odd

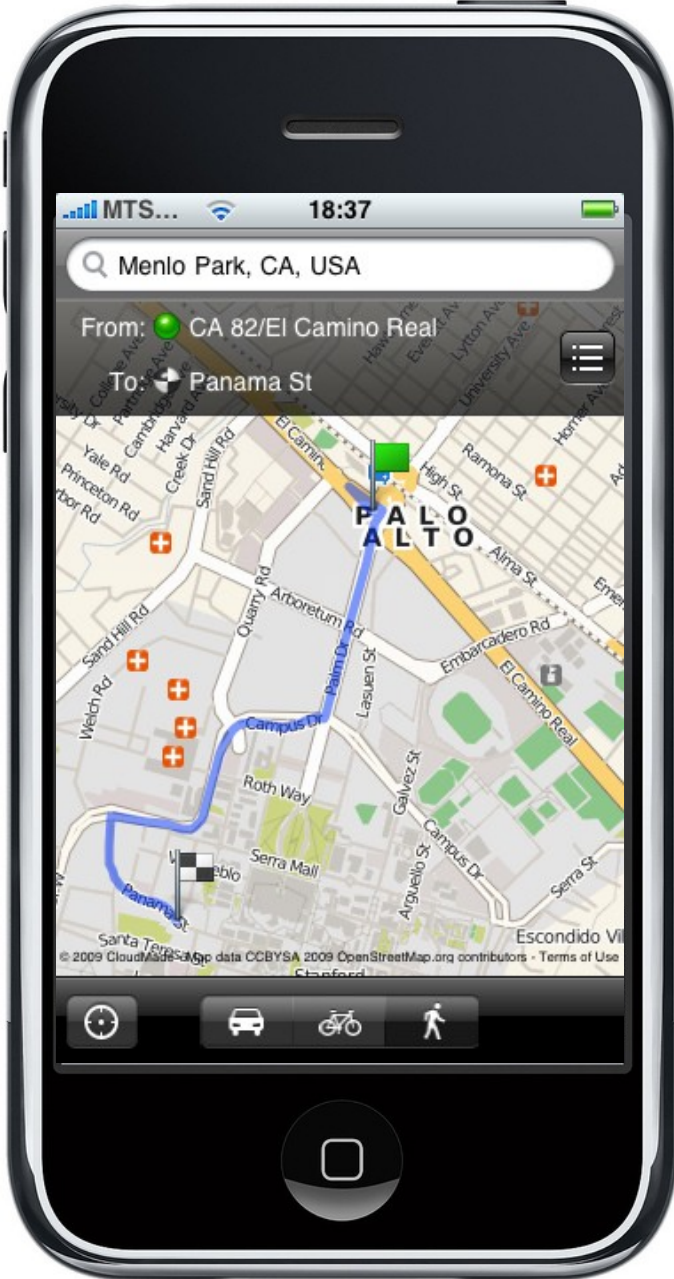
- Time: **10 minutes**
- Distance: **¾ of a mile**
- Quietness: 64 % Quite busy
- Leaving at: 2.24pm, 18th November, 2009
- Arriving at: 2.35pm, 18th November, 2009



Map images © 2009 OpenStreetMap.org licensed under Creative Commons Attribution-ShareAlike 2.0 License.





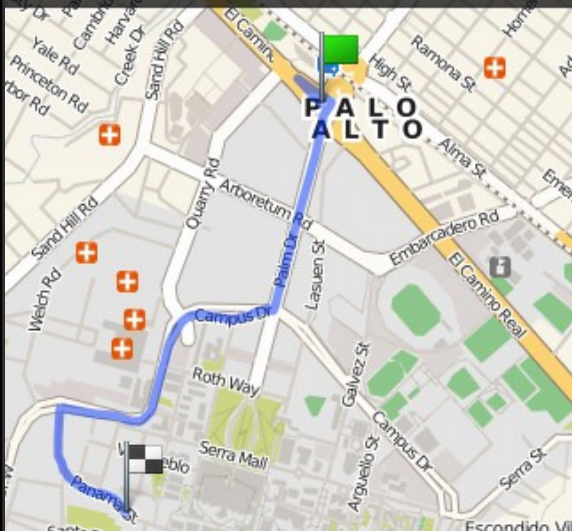


MTS... 18:37

Menlo Park, CA, USA

From: CA 82/EI Camino Real

To: Panama St



© 2009 CloudMade. Map data CC BY SA 2009 OpenStreetMap.org contributors - Terms of Use



Χωροθέτηση & πλούτος γεω-πληροφορίας

- Σχολεία
- Κέντρα απασχόλησης
- Πεζόδρομοι
- Ανοιχτές μπυραρίες
- Διευθύνσεις
- Αξιοθέατα
- ... Η λίστα είναι ατέλειωτη :-)





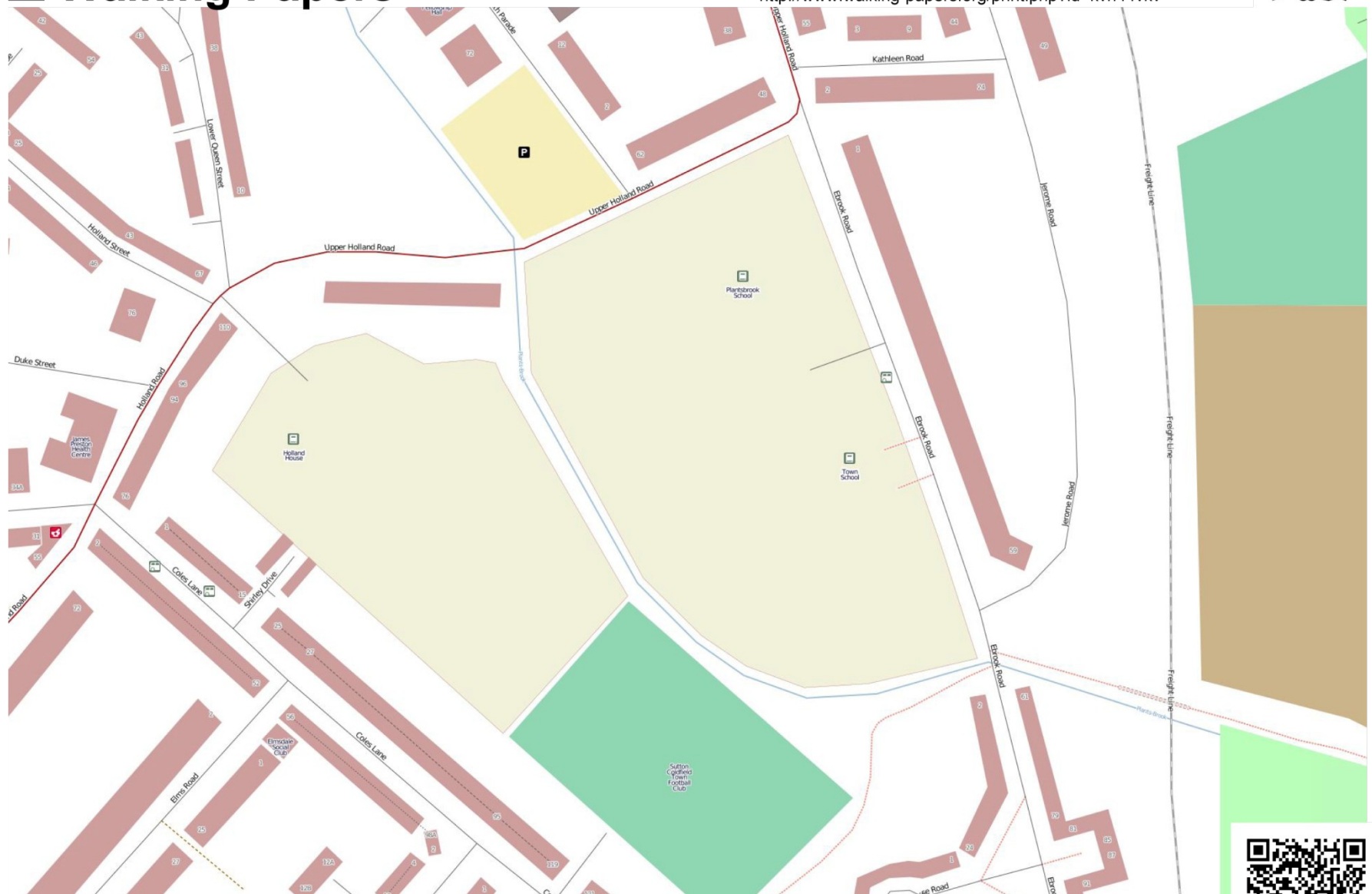
LET'S GO MAPPING





Walking Papers

Help improve OpenStreetMap by drawing on this map, then visit <http://www.walking-papers.org/print.php?id=kvh44kv>





Explore



Flickr has been hard at work, creating a way to show you some of the most interesting content on Flickr. We like to call it **Explore**.

Explore the goodness by choosing a good month.

Select a month:

You can also jump into a selected view of this month.

- Other places to explore include:
- a tour of the world
 - the popular tags page
 - Gallery Center
 - visiting the iStockphoto, or
 - Flickr Search Assistant
 - WWW.FLICKR.COM

Did you find what you were looking for? See back to... [Home](#) [Search](#) [Help](#) [Privacy](#) [Terms](#) [Feedback](#)

More interesting info from Flickr

7,000

Where'd you take that?

Explore millions of geotagged photos!

Location search:

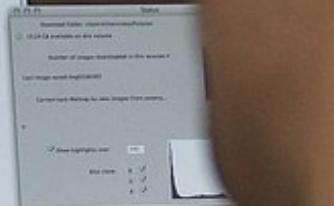
Here are a few maps that we think are cool:

- The Parents of God
- The Harborside Street Photographs Project
- Creative Photographs of Europe
- Houses over Paris

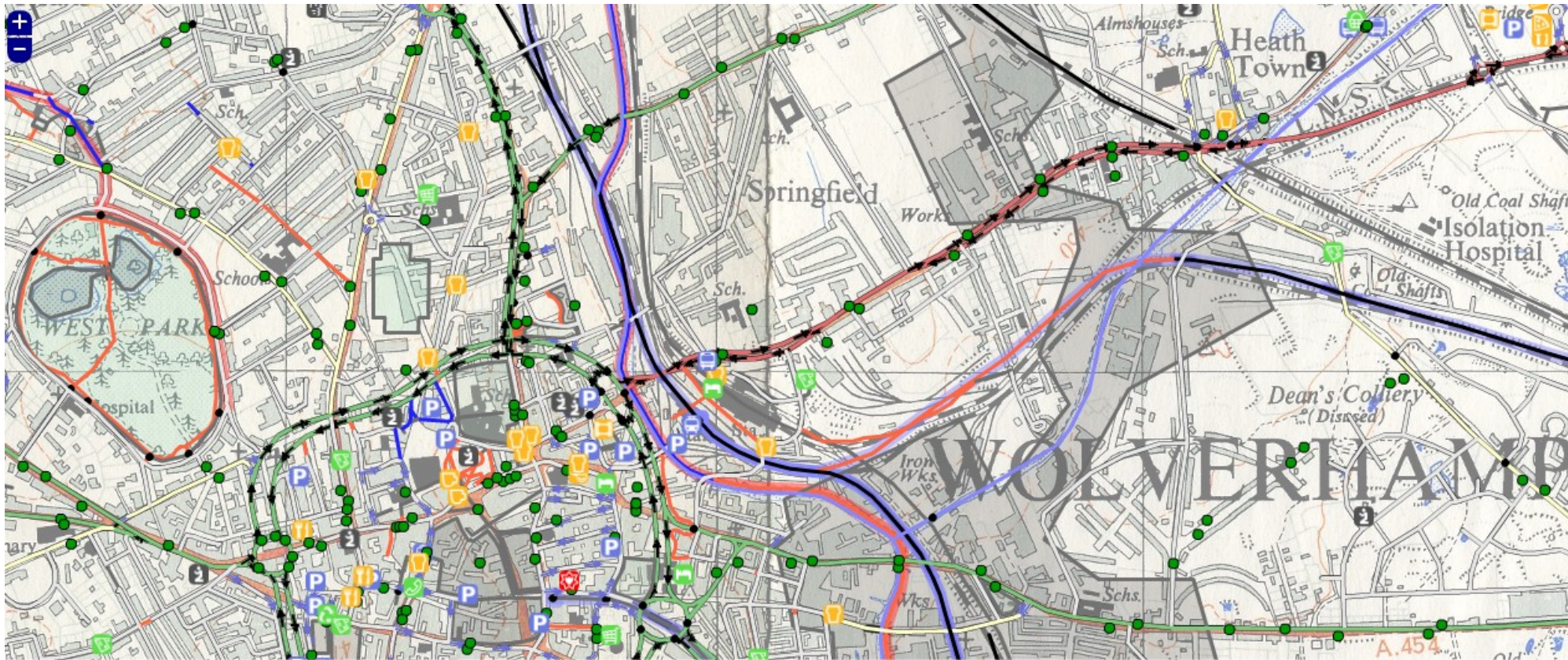
Search video uploads on Flickr to explore what took to making their own presentations or work presentations!

Explore Flickr Through Tags

art australia baby beach birthday blue box california camera canon the orange china christmas city dog england europe family foxes flowers food france friends fox detroit fox foxes Italy japan london the moon music







260m (z15) Drag and drop points of interest



- | | | | | | | |
|----------|----------------|------------------|-----------|--------------|-----------|--------------|
| Airport | Bus stop | Ferry | Parking | Rail station | Taxi rank | Bar |
| Cafe | Cinema | Fast food | Pub | Restaurant | Theatre | Convenience |
| Hotel | Pharmacy | Postbox | Recycling | Supermarket | Telephone | Fire station |
| Hospital | Police station | Place of worship | Museum | School | | |



Help Advanced

Editing live

TAGS

`key=value` είναι το κλειδί και η τιμή του.

Ελεύθερα βάζουμε ονόματα και τιμές σε ότι βλέπουμε !

Παραδείγματα:

`highway=motorway`

`amenity=school`

`access=private`

`horse=yes`



Attribution-Share Alike 2.0 Generic

You are free:



to Share — to copy, distribute and transmit the work



to Remix — to adapt the work



Under the following conditions:



Attribution. You must attribute the work in the manner specified by the author or licensor (but not in any way that suggests that they endorse you or your use of the work).



Share Alike. If you alter, transform, or build upon this work, you may distribute the resulting work only under the same or similar license to this one.

ODbL

You are free:



To Share: To copy, distribute and use the database.



To Create: To produce works from the database.



To Adapt: To modify, transform and build upon the database.

As long as you:



Attribute: You must attribute any public use of the database, or works produced from the database, in the manner specified in the ODbL. For any use or redistribution of the database, or works produced from it, you must make clear to others the license of the database and keep intact any notices on the original database.



Share-Alike: If you publicly use any adapted version of this database, or works produced from an adapted database, you must also offer that adapted database under the ODbL.



Keep open: If you redistribute the database, or an adapted version of it, then you may use technological measures that restrict the work (such as DRM) as long as you also redistribute a version without such measures.



Changeset: 2883322

Created at: Sun, 18 Oct 2009 14:09:41 +0000
Closed at: Sun, 18 Oct 2009 14:09:47 +0000
Belongs to: [blackadder](#)
Tags: comment = Pelsall
 created_by = JOSM/1.5 (2296 en_GB)
 52.6270797
Bounding box: -1.9835829 ([box](#)) -1.9645441
 52.6157405

Has the following 9 nodes: [369543329, v3](#)
[534692031, v1](#)
[534692030, v1](#)
[534692029, v1](#)
[534692028, v1](#)
[534692027, v1](#)
[534692026, v1](#)
[The Red Cow \(534692025, v1\)](#)
[534692024, v1](#)

Showing page 1 (1-9 of 9)

Has the following 32 ways: [42727031, v2](#)
[42727030, v2](#)
[Brewers Terrace \(42726980, v2\)](#)
[Brewers Terrace \(42726981, v2\)](#)
[42726982, v2](#)
[Marlpool Drive \(42727047, v2\)](#)
[Marlpool Drive \(42727048, v2\)](#)
[Marlpool Drive \(42727027, v2\)](#)
[Valley Side \(42727026, v2\)](#)
[Pasture View \(42727025, v2\)](#)
[Pasture View \(42727024, v2\)](#)
[Marlpool Drive \(42727028, v2\)](#)
[Valley Side \(42727023, v2\)](#)
[Windrush Close \(42727035, v2\)](#)
[Windrush Close \(42727034, v2\)](#)

< [2882537](#) | [blackadder](#) | [2883628](#) >
 < [2883321](#) | [2883323](#) >



[View area on larger map](#)



Way: Bush Grove (42726983)

Edited at: Sun, 18 Oct 2009 12:57:56 +0000**Edited by:** [blackadder](#)**Version:** 2**In changeset:** [2882537](#)**Comment:** Pelsall**Tags:** abutters = residential
highway = residential
name = Bush Grove
source = GPS Survey
surface = paved**Nodes:** [444760176](#) (also part of way [Walsall Road \(40221369\)](#))
[534330803](#)
[534330804](#)
[534330834](#)
[534330835](#)
[534330836](#) (also part of way [Bush Grove \(42726984\)](#))
[534330837](#)< [42726982](#) | [42726984](#) >[View area on larger map](#)
[View way on larger map](#)

File Edit View History Bookmarks Tools Help

http://www.openstreetmap.org/api/0.6/way/42726983

Google

This XML file does not appear to have any style information associated with it. The document tree is shown below.

```
- <osm version="0.6" generator="OpenStreetMap server">
- <way id="42726983" visible="true" timestamp="2009-10-18T12:57:56Z" version="2" changeset="2882537" user="blackadder"
  uid="735">
  <nd ref="444760176"/>
  <nd ref="534330803"/>
  <nd ref="534330804"/>
  <nd ref="534330834"/>
  <nd ref="534330835"/>
  <nd ref="534330836"/>
  <nd ref="534330837"/>
  <tag k="abutters" v="residential"/>
  <tag k="highway" v="residential"/>
  <tag k="name" v="Bush Grove"/>
  <tag k="source" v="GPS Survey"/>
  <tag k="surface" v="paved"/>
</way>
</osm>
```

OpenStreetMap



The Free Wiki World Map

[Help & Wiki](#)
[News blog](#)
[Shop](#)

[Make a Donation](#)

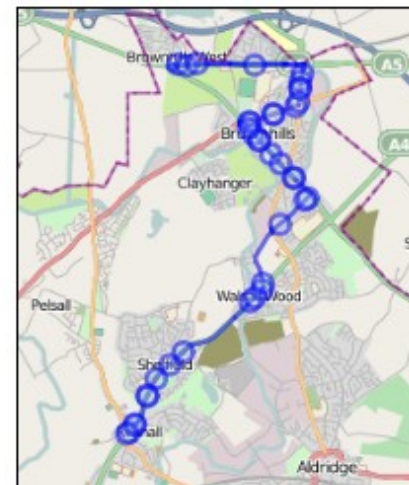


Relation: Bus Route 394A (NXWM) (176998)

< [176997](#) | [176999](#) >

Edited at: Sun, 18 Oct 2009 22:14:13 +0000
Edited by: [burto](#)
Version: 6
In changeset: [2889297](#)
Comment: Routing fixes
Tags: name = Bus Route 394A (NXWM)
operator = National Express West Midlands
ref = 394A
route = bus
type = route

Members:
Node [367994175](#)
Way [Lichfield Road \(32510982\)](#)
Node [Brownhills BE \(369543563\)](#)
Way [High Street \(32510983\)](#)
Node [369543456](#)
Node [369543137](#)
Way [High Street \(32491550\)](#)
Way [Chester Road \(32491549\)](#)
Way [Walsall Road \(32510981\)](#)
Node [Brownhills BB \(369543561\)](#)
Node [367994172](#)
Node [369543139](#)
Node [Brownhills BD \(369543566\)](#)
Way [Lichfield Road \(32692838\)](#)
Way [Lichfield Road \(37986420\)](#)
Way [Lichfield Road \(37988946\)](#)
Node [369543520](#)
Node [369543172](#)
Way [Lindon Road \(32489481\)](#)
Way [High Street \(37898404\)](#)
Node [365286017](#)



[View area on larger map](#)
[View relation on larger map](#)

Wiki

Browser address bar: http://wiki.openstreetmap.org/wiki/Main_Page

Navigation tabs: [page](#) | [discussion](#) | [view source](#) | [history](#)

Main Page

Available languages [Help](#)

العربية • Български • Brezhoneg • Català • Česky • Dansk • Deutsch • Ελληνικά • **English** • Esperanto • Español • Euskara • Suomi • Français • Frysk • Créole guadeloupéen • עברית • Hrvatski • Magyar • Interlingua • Íslenska • Italiano • 日本語 • 한국어 • Lietuvių • Latviešu • Македонски • Nederlands • Polski • Português • Português do Brasil • Română • Русский • Slovenščina • Svenska • Türkçe • Українська • Tiếng Việt • 中文(简体) • 中文(繁體) • 中文(台灣)

Missing languages [show](#)

Welcome to OpenStreetMap


OpenStreetMap creates and provides free geographic data such as street maps to anyone who wants them. The project was started because most maps you think of as free actually have legal or technical restrictions on their use, holding back people from using them in creative, productive, or unexpected ways.

[Show me the map!](#) [↗](#)

I want to see maps; get out of my way!

Beginners' Guide	All the resources for a complete beginner to learn about and get involved with OpenStreetMap.
Map Making	The complete reference to everything about editing our maps.
Development	Lend your programming skills to help make OpenStreetMap better.
FAQs	Got a question? The most common are answered here.
Press	Information and background for journalists.

Image of the week [↕](#)



Rostock-3D - 3D city model in OSM, with all buildings and correct building heights.

[Other featured images](#)

Meta Info [↕](#)

Recent changes

- Recent changes

Search

Navigation

- Main Page
- The map
- Mapping projects
- Map Features
- Help
- Blog
- Shop
- Donations

Toolbox

- What links here
- Related changes
- Upload file
- Special pages
- Printable version
- Permanent link

Recent changes

Recent changes

Navigation

Main Page

The map

Mapping projects

Map Features

Help

Blog

Shop

Donations

Toolbox

What links here

Related changes

Special pages

Printable version

Permanent link

EI:Main Page

Available languages

Help

العربية • Български • Brezhoneg • Català • Český • Dansk • Deutsch • **Ελληνικά** • English • Esperanto • Español • Eesti • Euskara • Suomi • Français • Frysk • Créole guadeloupéen • עברית • Hrvatski • Magyar • Հայերեն • Interlingua • Íslenska • Italiano • 日本語 • 한국어 • Lietuvių • Latviešu • Македонски • Nederlands • Polski • Português • Português do Brasil • Română • Русский • Slovenščina • Svenska • Türkçe • Українська • Tiếng Việt • 中文(简体) • 中文(繁體)

Missing languages

show

Καλωσήρθατε στο OpenStreetMap

Το OpenStreetMap δημιουργεί και παρέχει ελεύθερα γεωγραφικά δεδομένα, όπως οδικούς χάρτες, σε οποιονδήποτε τα επιζητά. Το έργο ξεκίνησε διότι οι περισσότεροι χάρτες που θεωρούνται ελεύθεροι, στην πραγματικότητα έχουν νομικούς ή τεχνικούς περιορισμούς στην χρήση τους, αποτρέποντας έτσι το κοινό από το να τους χρησιμοποιεί για δημιουργικούς, παραγωγικούς ή άλλους σκοπούς.

Δείξε μου τον χάρτη! ⁺⁻

Θέλω να δω τον χάρτη, πήγαινε με εκεί!

Οδηγός για Αρχαρίους

Όλες οι απαραίτητες πληροφορίες για τον αρχάριο που θέλει να μάθει και να συμμετάσχει στο Openstreetmap.

Δημιουργία Χαρτών

Ο πλήρης οδηγός για την επεξεργασία των χαρτών μας.

Ανάπτυξη

Συμβάλλεται στην βελτίωση του OpenStreeMap με τις προγραμματιστικές σας γνώσεις.

FAQs

Έχετε κάποια ερώτηση; Οι πιο κοινές απαντώνται εδώ.

Τύπος

Πληροφορίες και ιστορικό για δημοσιογράφους.

Portals ⁺⁻

Χαρτογράφηση [Potlatch](#) • [JOSM](#) • [Merkaartor](#) • [GPS Reviews](#) • [Map Features](#) • [Proposed features](#)

Έργα της κοινότητας [Country projects](#) • [Pictograms](#) • [Συνεργασία με τη Wikipedia](#)

Σχεδιαστές [Mapnik](#) • [Osmarender](#) • [Kosmos](#)

Διαδρομές [Ποδήλατο](#) • [Πεζοπορία](#)

Δεδομένα [Εισαγωγή](#)

Template:Εικόνα της εβδομάδας

Πληροφορίες ⁺⁻

Κατάσταση πλατφόρμας **Up and running**

Στατιστικά [Stats, Daily Stats Report](#) ⁺⁻

Δραστηριότητα [RSS feeds](#)

Συμβαλλόμενα έργα [Free The Postcode, Mapstraction](#) ⁺⁻, [OpenStreetPhoto](#) ⁺⁻

Template:Νέα

Lolcat of awesomeness ⁺⁻



For the awesum team that organised [State Of The Map 2010](#). You know who you are, be proud.



Find out more about OpenStreetMap's upcoming license change (translations) (discussion)

EI:Beginners' Guide

Available languages

Help

• Български • Català • Český • Dansk • Deutsch • Ελληνικά • English • Español • Eesti • Euskara • Suomi • Français • עברית • Hrvatski • Magyar • Interlingua • Italiano • 日本語 • 한국어 • Lietuvių • Latviešu • Nederlands • Norsk (bokmål) • Polski • Português do Brasil • Română (Moldova) • Русский • Slovenčina • Shqip • Svenska • Українська • Tiếng Việt • 中文(简体) • 中文(繁體)

Missing languages

show

Ο χάρτης

Αποστολή

Βοήθεια

Blog

Κατάστημα

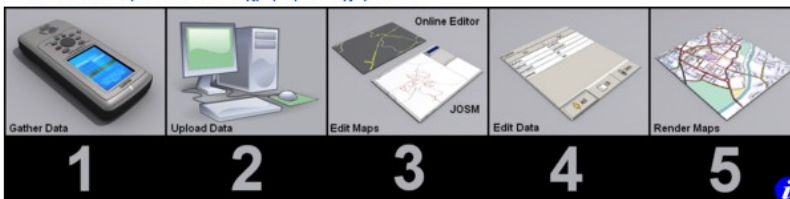
Δωρεά

Συμμετέχοντας

- Αυτός είναι ο οδηγός για αρχάριους, για το πώς μπορείτε να συμμετάσχετε στο OSM.
- Ο οδηγός αυτός προϋποθέτει την εγγραφή σας στο OSM τόσο [εδώ](#) όσο και σε αυτό το wiki, τα οποία είναι δύο ξεχωριστά logins.
- Αυτός είναι ένας βασικός οδηγός. Πιο προχωρημένες και κοινές απορίες μπορούν να βρεθούν σε ξεχωριστές σελίδες στο wiki, ενώ περισσότερες πληροφορίες είναι διαθέσιμες [εδώ](#). Επιπλέον βοήθεια από την [κοινότητα](#) μπορεί να βρεθεί σε [διάφορα μέρη](#). Μπορείτε να παρακολουθήσετε ένα σύντομο [εισαγωγικό βίντεο](#) από αυτή τη σειρά [για να ενημερωθείτε](#).
- Εάν επιθυμείτε να προσθέσετε σύντομες επισημάνσεις στον χάρτη, έτσι ώστε κάποιος πιο έμπειρος χαρτογράφος να τις δει μπορείτε να χρησιμοποιήσετε το [OpenStreetBugs](#)

Τα πέντε βήματα για την δημιουργία ενός χάρτη

1. Συλλογή δεδομένων
2. Αποστολή δεδομένων
3. Δημιουργία/Επεξεργασία δεδομένων OSM
4. Επισήμανση δεδομένων και προσθήκη λεπτομερειών
5. Απόδοση εικόνων και χρήση των χαρτών!



Categories: Guide | HOWTO

This page was last modified on 28 December 2009, at 17:44.

Content is available under [Creative Commons Attribution-ShareAlike 2.0 license](#).



JOSM

Recent changes

Recent changes

Navigation

Main Page

The map

Mapping projects

Map Features

Help

Blog

Shop

Donations

Toolbox

What links here

Related changes

Special pages

Printable version

Permanent link

Available languages

[Help](#)

• [Deutsch](#) • **[English](#)** • [Español](#) • [Eesti](#) • [Euskara](#) • [Suomi](#) • [Français](#) • [עברית](#) • [Italiano](#) • [日本語](#) • [Nederlands](#) • [Português do Brasil](#) • [Русский](#) • [Slovenčina](#) • [Shqip](#) • [Українська](#) • [Tiếng Việt](#) • [中文\(简体\)](#)

Missing languages

[show](#)

[Help](#)

[About](#)

[Browsing](#)

[Editing](#)

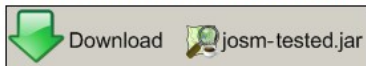
[Upload](#)

author:

JOSM is the "**Java OpenStreetMap Editor**", a desktop application originally developed by [Immanuel Scholz](#) and currently maintained by [Dirk Stöcker](#). Its homepage is located at <http://josm.openstreetmap.de/> .

Install

You can download JOSM from [the JOSM homepage](#) [either by browsing there or by clicking the following...](#)



[josm-tested.jar](#) [is a stable version of JOSM](#)

[josm-latest.jar](#) [is the latest development version](#)

[java web-start](#) [link to launch from here](#)

[josm-setup.exe](#) [Windows Installer](#)

Linux users can install JOSM using their distro's package manager.

- for **Ubuntu**, install package=josm, e.g. via `sudo aptitude install josm`

Usage

There are **other editors** for OpenStreetMap data, like the [Potlatch](#) online editor or [Merkaartor](#).

JOSM is a feature-rich editor with an interface which can seem complex at first. It also requires a little installation and configuration effort to get some plugin features working (particularly Yahoo imagery). Have a look at the [comparison of editors](#) if you're still unsure which editor to choose.

JOSM/Guide

A guide taking you through getting started, downloading some data, basic editing and more advanced editing features. It is intended for beginners to read the guide from the beginning. This is a descriptive guide providing a simple introduction. Some details are intentionally left out.

JOSM Help [↗](#)

This help manual should provide more exhaustive in-depth explanations of each JOSM feature. It is intended to be used as a reference manual, rather than reading from end-to-end. It is also accessible by pressing F1 within the application (context sensitive help)

Video Tutorials

Some JOSM videos as part of the Steve Coast's video series ([\[1\]](#) [↗](#))

[JOSM basic introduction](#) [↗](#)

JOSM



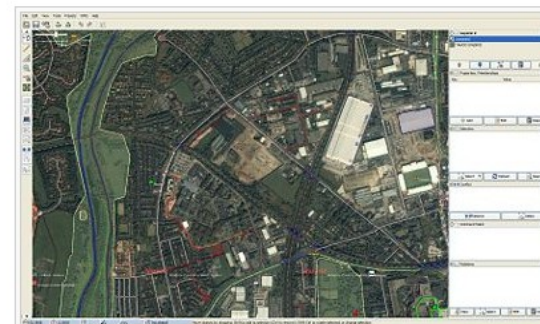
<http://josm.openstreetmap.de/> [↗](#)

version: 3592 (2010-10-05)

license: GPL

win;linux;mac

"Offline highly expandable map editor"



JOSM screenshot, showing Yahoo! aerial imagery via the [WMSPugin](#) [↗](#)

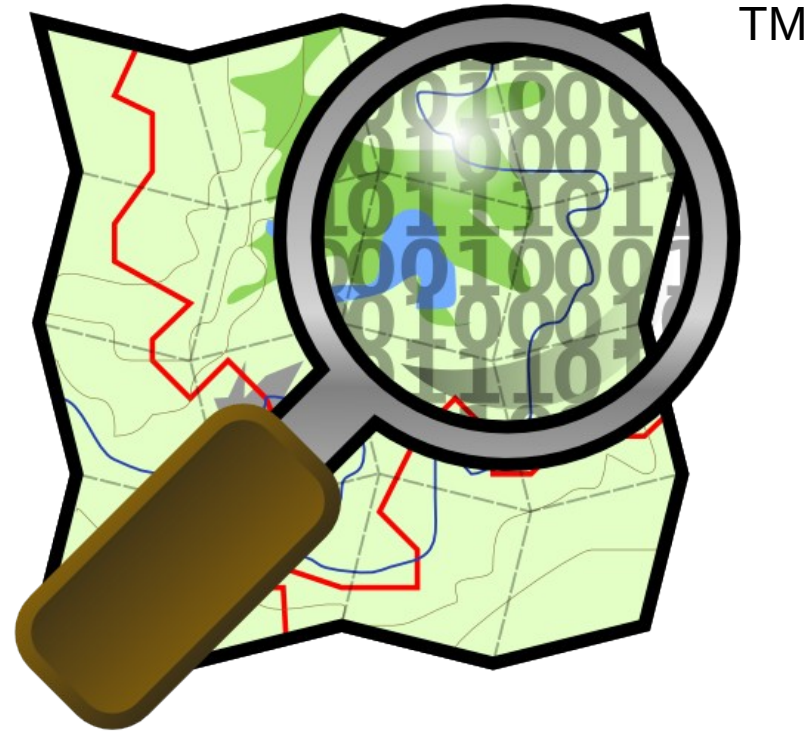
Επικοινωνία με την διεθνή κοινότητα

- <irc://irc.oftc.net/osm>
- Λίστες ταχυδρομείου πχ η βρεταννική talk-gb
- Το wiki.openstreetmap.org
- Το forum.openstreetmap.org
- Email χρηστών μέσω του ιστοχώρου

Χαρτογραφικές εξορμήσεις



- Εκπαίδευση
- Δανεισμός gps
- Βοήθεια
- Έμπειροι καθοδηγούν νεώτερους :-)



OpenStreetMap.org

*Andy "blackadder" Robinson
Για την ελληνική απόδοση Ch Iossif*